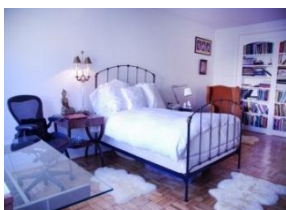




230/231 POTOMAC PLAZA



W
WINSTON REAL ESTATE
W
Over 40 Years of Real Estate Experience

Call GIGI WINSTON - Broker, GRI®
(202) 333-4167 | watergateapartments.com

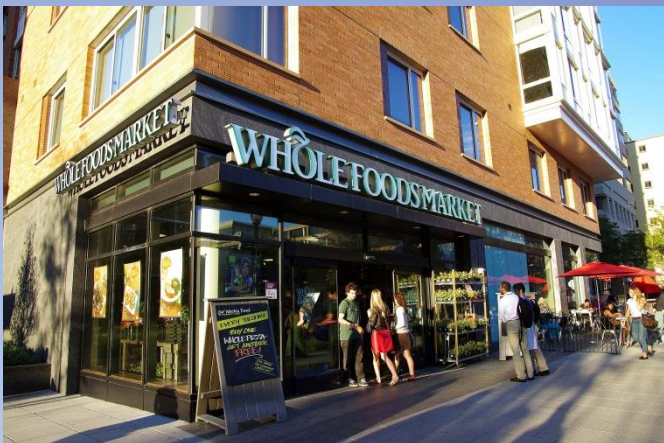
230/231

POTOMAC PLAZA

Potomac Plaza amenities are boundless

Work out in the exercise room. Conduct your next meeting in the conference room. Plan and host your 4th of July party on the rooftop terrace! Other amenities include 24 hour desk service, garage attendants, and laundry facilities.

Potomac Plaza is a residence cooperative located in the historic Foggy Bottom District of Washington DC. Located a block from the Foggy Bottom Metro station, it is close to the Watergate shops including CVS and is within easy walking distance of the Kennedy Center, the Mall, Rock Creek Park, Georgetown Waterfront, Whole Foods and Trader Joes.



Offered at \$749,000

- 2,170 square feet with corner floor plan offering 2 sides of light and big sunny picture windows
- Spacious and bright 2 bedroom plus den, 2 baths
- Separate dining area with gorgeous tree lined street vista
- Kitchen with tall cabinets and granite flooring
- Large separate dining room with French doors leading to den
- Custom built-ins throughout
- Walk-in closet and ample closet space throughout
- Elegant entry foyer
- Parking available in the building for rent - \$135 after waiting list and rental parking nearby



FINANCIAL INFORMATION

MONTHLY COOP FEE \$ 1,921.⁰⁰
(includes maintenance, property taxes, parking & utilities)



Call **GIGI WINSTON** - Broker, GRI®
(202) 333-4167 | watergateapartments.com



To learn more, visit our web site or
scan the code with a smart phone.